



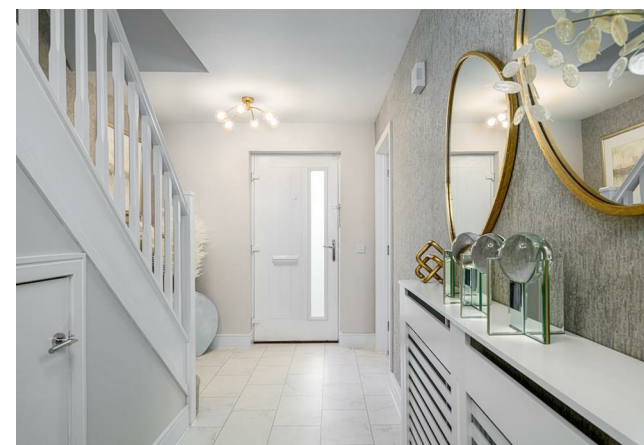
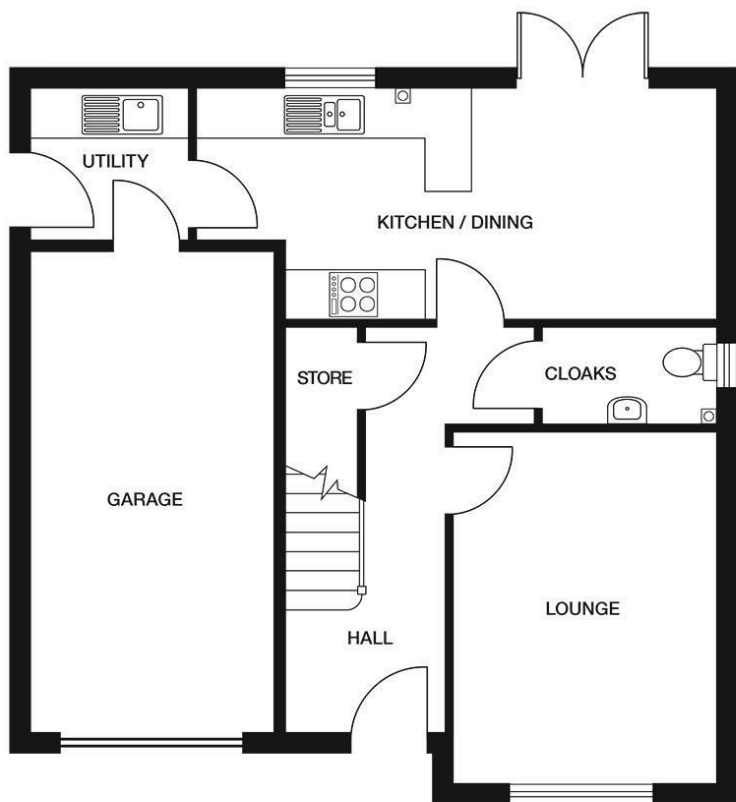
HEMMINGS HOMES

FIXED ASKING PRICE

£475,000

Watanabe Road

South Queensferry, EH30 9SP



Agents Note: Whilst every care has been taken to prepare these particulars, they are for guidance purposes only. All measurements are approximate and are for general guidance purposes only and whilst every care has been taken to ensure their accuracy, they should not be relied upon and potential buyers/tenants are advised to recheck the measurements

Energy Efficiency Rating		
	Current	Potential
Very energy efficient - lower running costs		
(92 plus) A		
(81-91) B	91	
(69-80) C		
(55-68) D		
(39-54) E		
(21-38) F		
(1-20) G		
Not energy efficient - higher running costs		
Scotland	EU Directive 2002/91/EC	



OFFICE ADDRESS
376 Brandon Street
Motherwell
North Lanarkshire
ML1 1XA

OFFICE DETAILS
01698 263413
enquiries@hemmingshomes.co.uk
hemmingshomes.co.uk